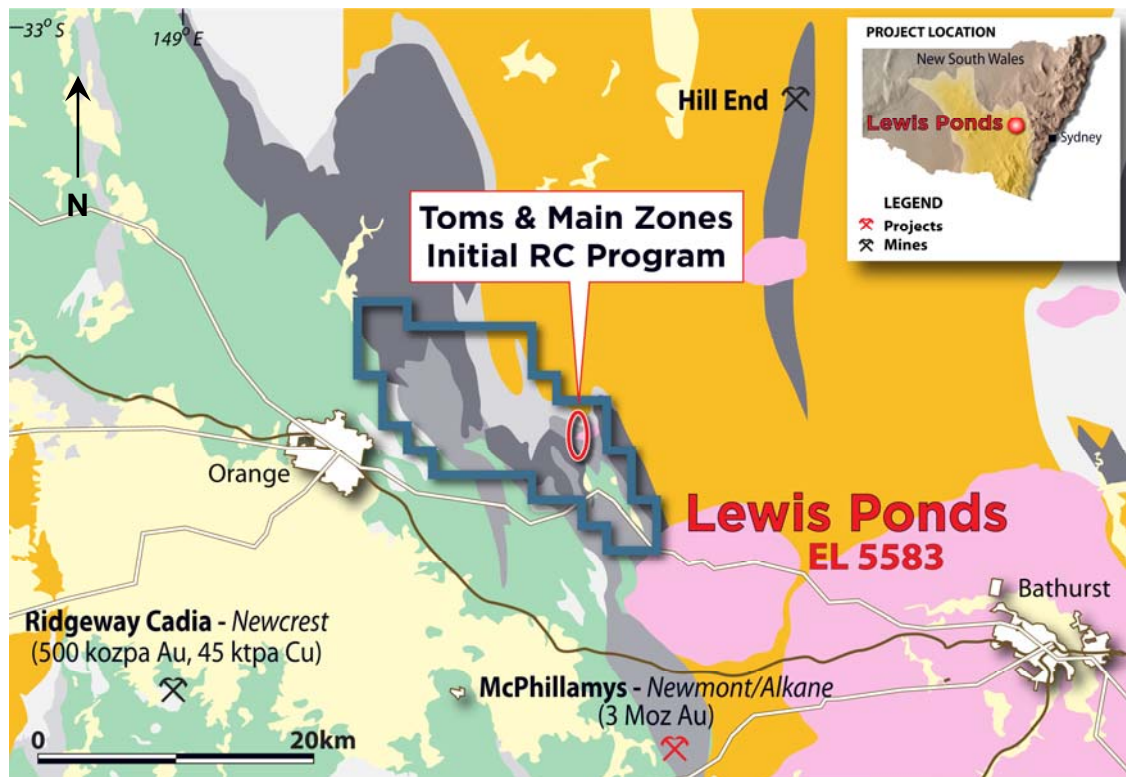


## TRIAUSMIN COMMENCES DRILLING ON LEWIS PONDS BASE AND PRECIOUS METAL PROJECT, NEW SOUTH WALES, AUSTRALIA

**November 3, 2011** - TriAusMin Limited (ASX: TRO) (TSX: TOR) (“TriAusMin” or the “Company”) is pleased to announce that it has commenced drilling on its 100% owned Lewis Ponds Project as part of its exploration efforts to expand the existing base and precious metal resource inventory previously identified on the property.

The Lewis Ponds Exploration Licence covers 164 square kilometres and is located 15 kilometres from the city of Orange, New South Wales, Australia and is situated within a well-established mining region.

TriAusMin has previously defined an Indicated Mineral Resource<sup>1</sup> of 6.35 million tonnes grading 2.4% zinc, 0.2% copper, 1.4% lead, 1.5 grams per tonne (g/t) gold and 68 g/t silver and an Inferred Mineral Resource<sup>1</sup> of 0.27 million tonnes grading 3.0% zinc, 0.1% copper, 1.9% lead, 1.1 g/t gold and 96 g/t silver occurring in the Toms and Main Zone deposits. In addition, numerous base and precious metal occurrences and historical workings exist across the property. The potential for the delineation of an economic base and precious metal deposit on this well located property is believed to be high (Figures 1 & 2).



**Figure 1:** Lewis Ponds project location map and drill target area.

The initial drilling programme will consist of 8 to 9 shallow reverse circulation (RC) holes targeting the historical workings at Torpy's Shaft and the interpreted link with the Main Zone's B lens (Figure 2). This forms an initial step in investigating the open pit potential above and adjacent to the defined Resources. The strike extension of the historical workings at Torpy's Shaft coincides with B lens to the north and this area remains poorly tested. Previous drilling has returned ore-grade base and precious metal mineralization over mineable widths (Figure 2).

The objective of the current drilling program is to define mineral resources which could be mined by open pit methods that would also enhance the economic viability of mining the Tom and Main Zone deposits. Results from this drilling are expected to be available in December upon receipt of final assays.

Following the RC drilling the Company will undertake a 1000 meter drill programme to test high priority electromagnetic targets identified by the 2010 VTEM geophysical survey. These targets are coincidental with known base metal mineralization and historical workings elsewhere on the Lewis Ponds property. Further information on this second round of drilling will be made available upon the commencement of this programme.

### **Company Background**

*TriAusMin is engaged in the exploration and development of base and precious metals deposits located in the Lachlan Fold Belt in New South Wales, Australia. In particular, TriAusMin's exploration projects include large landholdings at Woodlawn, Lewis Ponds as well as other regional exploration properties.*

For further information, please visit [www.triausmin.com](http://www.triausmin.com) or contact:

#### **Australia:**

Mr Wayne Taylor, Managing Director and Chief Executive Officer:  
Tel: +61 02 9299 7800 (Sydney) [inquire@triausmin.com](mailto:inquire@triausmin.com)

#### **Canada:**

Ms Carolyn Muir, Manager Investor Relations:  
Tel: +1 905 727 8688 (Toronto) [info@triausmin.com](mailto:info@triausmin.com)

### **1. JORC Compliance and Declarations**

(a) Australasian Code for Reporting of Exploration Results, Mineral Resources and Ore Reserves (the 'JORC code'), 2004 Edition, JORC (of AusIMM, AIG & MC), December 2004.

(b) The information in this report that relates to exploration results at the Company's Lewis Ponds tenement is based on information compiled by Dr Robert Valliant, an employee of the Company, who is a Member of the Australian Institute of Geoscientists. Dr Valliant has sufficient experience which is relevant to the style of mineralisation and type of deposit under consideration and to the activities which he is undertaking to qualify as a Competent Person as defined in the 2004 Edition of the 'Australasian Code for Reporting of Exploration Results, Mineral Resources and Ore Reserves'. Dr Valliant consents to the inclusion in the report of the matters in the form and context in which they appear based on information derived from his technical work.

Figure 2: Long section of Toms & Main Zones.

